

MRI

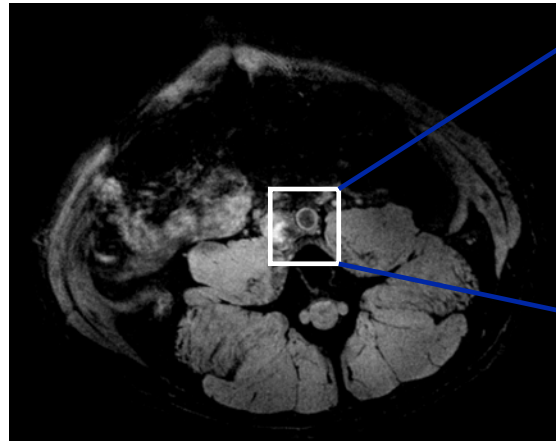
In vivo 7 Tesla MRI

Non Human Primate Atherosclerosis Imaging with a Doty Scientific 150 mm I.D. quadrature volume RF coil

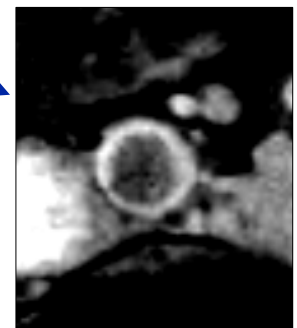
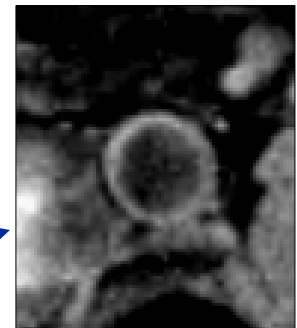
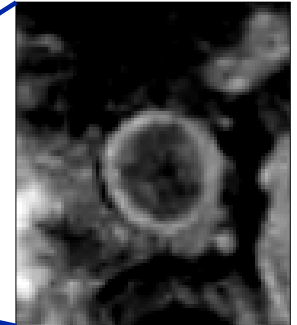
*We wish to thank the Center for Biomolecular Imaging &
Department of Pathology Section for Lipid Sciences
Wake Forest University School of Medicine for sharing their results.*

Monkey abdominal aorta images were acquired with a 15 cm, 300 MHz, Doty quadrature birdcage coil. The 6.5kg male Cyno monkey has been on a high fat diet for 6 years and has advanced atherosclerosis.

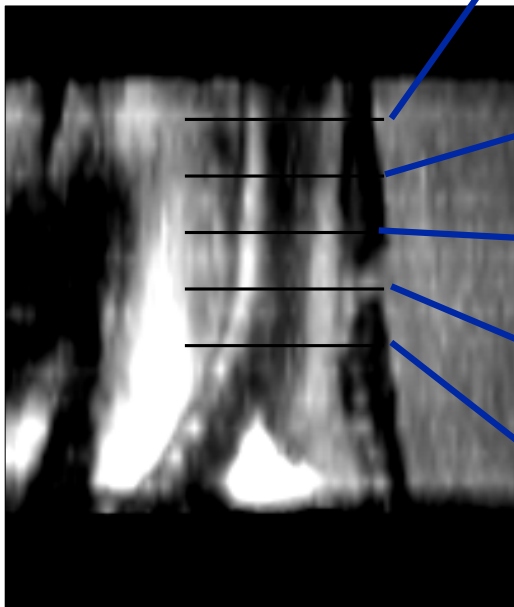
Transverse Anatomical View



Magnified Transverse View of Abdominal Aorta



Coronal reconstruction showing descending abdominal aorta proximal to the iliac bifurcation



Transverse Image Planes (5 out of 16 shown)

Acquired with a 3D FLASH pulse sequence with a fat suppression prepulse and a saturation slice placed above the image plane to suppress signal from the flowing blood.

An 8.0 cm fov and a 512 matrix gives an in-plane resolution of 156 μm , slice thickness is 1.0 mm, TR=28.8 ms, TE=5.7 ms, FA=20 degrees, NEX=6
25 min acquisition time



A Doty RF Imaging Coil